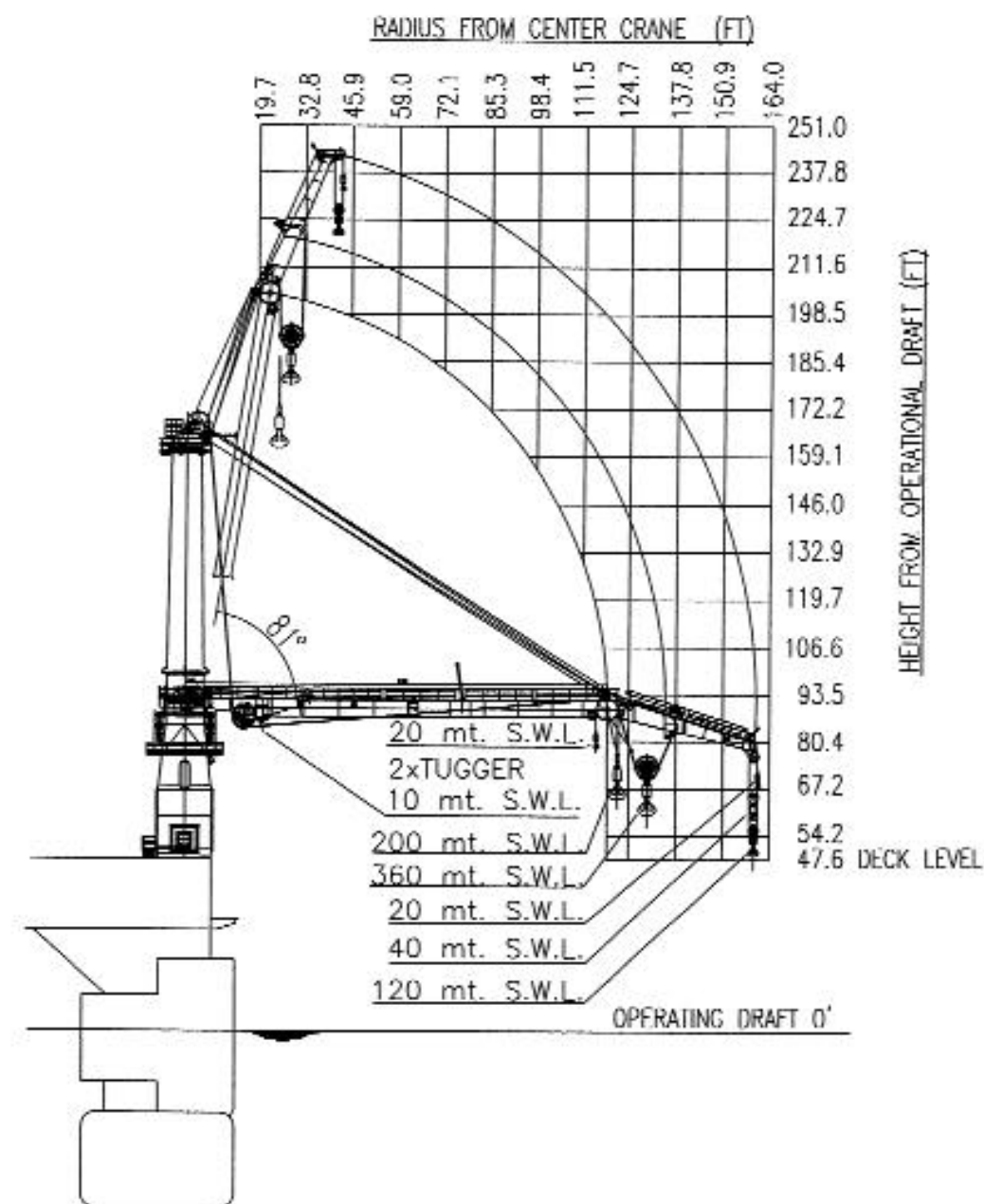


The Q4000



WELL INTERVENTION

The vessel is equipped to perform a full range of through-tubing intervention, remediation or abandonment.

HEAVY LIFT

The Q4000 provides a stable platform, combined with a 360 MT crane and dynamic derrick lift capacity of 600 MT.

CONDUCTOR AND SURFACE CASING

The vessel can efficiently drill, cement and install wellheads prior to intermediate drilling operations.

RIGID JUMPER SPOOLS

The vessel's large deck space and facilities allow for large jumpers to be installed.

SUCTION PILES

Suction piles and other anchoring devices can be installed in depths up to 10,000 feet.

PIPELAY

The vessel can be rapidly configured for the deepwater installation of all types of reeled products.

CORING

The vessel has full drilling (riserless) and pipe handling capability.

GENERAL CONSTRUCTION

The vessel can fulfill various construction tasks with the 150Hp built-in heavy work class ROV and a mobile saturation system for diving operations to 1,000 feet can be provided as required.

CORPORATE OFFICE

Houston
400 North Sam Houston Pkwy. East
Houston, Texas 77060
Toll Free: 888.345.2347
Office: 281.618.0400
Fax: 281.618.0500

SUPPORT BASE

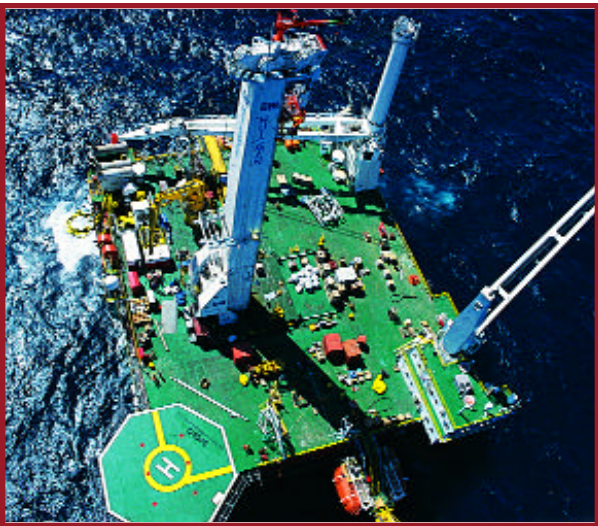
Helix Port of Iberia
1902 Diver Drive
New Iberia, LA70660
Office: 337.374.0001
Fax: 337.369.1651

SALES OFFICE

New Orleans
1615 Poydras Street
Suite 1050
New Orleans, LA70112
Toll Free: 800.492.0899
Office: 504.522.4340
Fax: 504.522.3507



www.HelixESG.com



FLAG U.S.A.
YEAR BUILT 2002

CLASSIFICATION
ABS, Class + A1 Column Stabilized
Unit, AMS, ACCU, DPS-3

ACCOMMODATIONS
Accommodates 133 People
Marine Crew 71 People
Charter/Client 62 People

PRINCIPAL DIMENSIONS
Main Deck Area 4,785.7 m²
..... (51,512.3 ft²)
Beam 52.3 m (171 ft)
Depth to Weather Deck 29.5 m (97 ft)

PONTOON DIMENSIONS
Number 2
Length 95.1 m (312 ft)
Breadth 13 m (42.7 ft)
Depth 8.1 m (26.6 ft)

DECK LOAD
Variable Deck Load 4,409.2 tons
..... (4,000 MT)
Average Deck Load Capacity
..... 3 MT per m² (3.3 tons per ft²)

DISPLACEMENT (fresh water)
Transit Draft 15,046 MT (at 7.6 m)
..... [16,585.4 tons (at 24.9 ft)]
Survival Draft .. 20,673 MT (at 13.1 m)
..... [22,788.1 tons (at 43 ft)]
Operational Draft 22,201 MT (at 15.1 m)
..... [24,472.4 tons (at 49.5 ft)]
Total Lightship Weight (est.)
..... 13,062.4 tons (11,850 MT)

THRUSTERS
• Installed Power - 6 generator sets at
3,520 kW each
• Azimuthing Thrusters - 4 aft 2,900
kW x 900 RPM each, 2 fwd.
retractable 2,900 kW x 900 RPM ea.

SPEED
• Transit - 13.5 knots (at 24.9 ft / 7.6 m
surface draft)
• Operational - 7.5 knots (at 49.5 ft /
15.1 m submerged draft)

MAIN CRANE
• Electric driven, 360° revolving
designed and manufactured by
Huisman-Itrec (Port side, aft)
• Submersible block lifting capacity
396.8 tons (360 MT) at 59.1 ft (18 m)
radius:
Boom Length 36.5 m (119.8 ft)

• 242.5 tons (220 MT) rated traction
winch in crane base, acts as the
main hoist wire with 12,500 ft
(3,810 m) of 3.6 in. (92 mm) diameter
non-rotating wire rope
• Traction winch take-up winch
in port side pontoon:
Main Hook Min. Radius 8.7 m (28.5 ft)
Main Hook Max. Radius 39 m (128 ft)

Main Hook Travel:
Single Part 200 MT (at 3,000 m)
..... [220.5 tons (at 9,842.5 ft)]
Two Part 360 MT (at 1,500 m)
..... [396.83 tons (at 4,921.3 ft)]

MAIN CRANE WHIP LINE
Submersible block lifting capacity
176.4 tons (160 MT) at 28.2 ft (8.6 m)
radius:
Min. Radius 13.1 m (43 ft)
Max. Radius 49 m (160.8 ft)

Hook Travel:
Single Part 20 MT (at 500 m)
..... [22.1 tons (at 1,640.4 ft)]
Two Part 40 MT (at 250 m)
..... [44.1 tons (at 820.2 ft)]
Four Part 120 MT (at 125 m)
..... [132.3 tons (at 410.1 ft)]

SECONDARY CRANE
• Electric driven, 360° revolving,
designed and manufactured by
Huisman-Itrec (Port side, forward)
• Submersible block lifting capacity
160 MT (176.4 tons) at 14.5 m
(47.6 ft) radius
• Submersible block to 304.8 msw
(1,000 fsw)

Min. Radius 5.3 m (17.4 ft)
Max. Radius 34 m (111.6 ft)

Hook Travel:
Single Part 20 MT (at 500 m)
..... [22.1 tons (at 1,640.4 ft)]
Two Part 100 MT (at 150 m)
..... [110.23 tons (at 492.1 ft)]
Four Part 160 MT (at 100 m)
..... [176.4 tons (at 328.1 ft)]

MOONPOOL DIMENSIONS
Weather Deck ... 39 ft x 22 ft (819 ft²)
..... [11.9 m x 6.4 m (76.1 m²)]

MOONPOOL DOOR (sliding)
Static Working Load 600 MT (661.4 tons)
Skidding Working Load. 600 MT
..... (661.4 tons)
False Rotary 1.3 m (49.2 in.)
'U' Slot to False Rotary 0.6 m (21.7 in.)
Under Door Guide Wire Sheaves 4

DYNAMIC POSITIONING (DP) SYSTEM
The DP system is an ALSTOM DPS 902
+ 901 back-up, triple voting dynamic
positioning system. The system com-
prises two identical systems (DP-A&B)
located in the primary location,
together with a slave console (slave
DPC) and a third system (master DPC)
located separately in a back-up room.

MULTI PURPOSE TOWER (MPT)
Hook Load 600 MT (661.4 tons)
Free Lifting Height 44 m (144.4 ft)
Active & Passive Compensated

WELL OPERATIONS SYSTEMS
• Hydralift Topdrive, iron rough neck
and pipe handling systems; 20 MT
(22.1 tons) Knuckleboom crane for
pipe handling
• Well service pumps - 2 Schlumberger
MD 1000 high pressure pump and
charge system
• Intervention riser system 7 3/8"
through bore system or others as
per client.

HELICOPTER LANDING DECK
Starboard bow, rated up to Sikorsky
S-61N

ROV SYSTEM
150 HP cursor deployed unit for oper-
ations in heavy weather (3,000 m /
9,842.5 ft rated)

MAIN DIESEL GENERATOR SETS
• The main generating plant consists
of 6 diesel engine sets rated at 3,520
kW each.
• The diesel engines are capable of
operating at an ambient air
temperature of 45° centigrade
(max.), seawater temperature of 30°
centigrade and an average air
temperature of 90% with
atmospheric pressure of 760 mm
mercury.
• One port and one starboard engine
comply with requirements for
emergency generation.

BALLAST SYSTEM
• Pumps - 8
• Location - Pump rooms in port and
starboard pontoons
• Capacity - 1,100 GPM at 50 psi ea.

POTABLE WATER SYSTEM
2 Pumps @ 220 GPM at 72 psi each
• Water Makers - 2 @ 3,300 gal. each
per day
• Water Heaters - 3 @ 120 gal. each
per day
• Hot Water Circulating Pumps - 2
Pumps @ 15 GPM at 14.5 psi

INDUSTRIAL WATER SYSTEM PUMPS
2 centrifugal type at 220 GPM at 72 psi
each

TANK CAPACITIES
Salt Water Ballast 45,462.8 BBLS
..... (7,228 m³)
Fuel Oil ... 13,663.4 BBLS (2,172.3 m³)
Industrial Water 2,760 BBLS (438.8 m³)
Potable Water .. 2,760 BBLS (438.8 m³)
Brine 12,484 BBLS (1,984.8 m³)

SERVICE AIR COMPRESSOR SYSTEM
• Compressors - 2
• Location - Aft port/starboard upper
column
• Type - Enclosed rotary screw
• Capacity - 795 cfm each
• Full Load Pressure - 150 psi ea.

SERVICE AIR RECEIVER
• Units - 3
• Capacity - 106 cubic feet each
• Max. Working Pressure - 150 psi ea.

LIFE SAVING EQUIPMENT
• Life Boats - 4 x 70 Person, totally
enclosed motor propelled safety
crafts (TEMPSC)
• Life Rafts - 8 x 25 Person, self-
inflatable rafts
• Life Jackets - 175, stowed in cabins,
1 per bunk, remainder stowed in
muster stations.